

TRANSCEND PRO SURFACE MOUNT

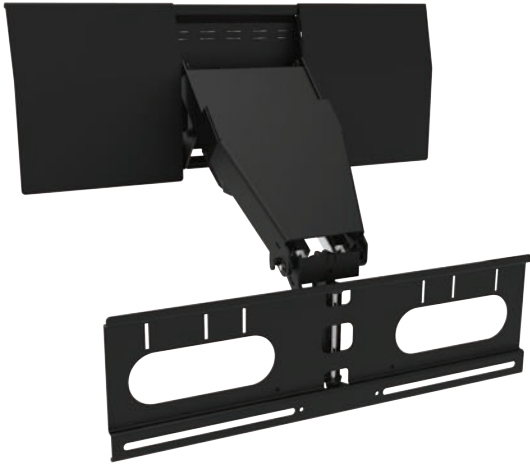
MOTORIZED DROP DOWN MOUNT

For Up to 75" TV

Downward Travel	27"
TV Maximum Screen Size	75"
Maximum Weight	125 lbs
Swivels	Up to 40° left and right

The Transcend Pro Surface motorized over-mantel mount was built to optimize TV positioning. This precision-engineered mechanism is coupled with superior linear actuation technology to suspend up to 75" TVs at the optimal viewing height with the press of a button. The Transcend Pro Surface's slim profile allows the screen to rest only 4.6 inches off the mounting wall, while 40 degree swivel makes it even more versatile.

- Industry-Leading Reliability
- Easy to Install
- Ships Fully Assembled



All Nexus products are shipped in custom-made protective packaging, and they include everything you need to mount and operate them. The products are designed for easy assembly, and simple instructions with photos are included.

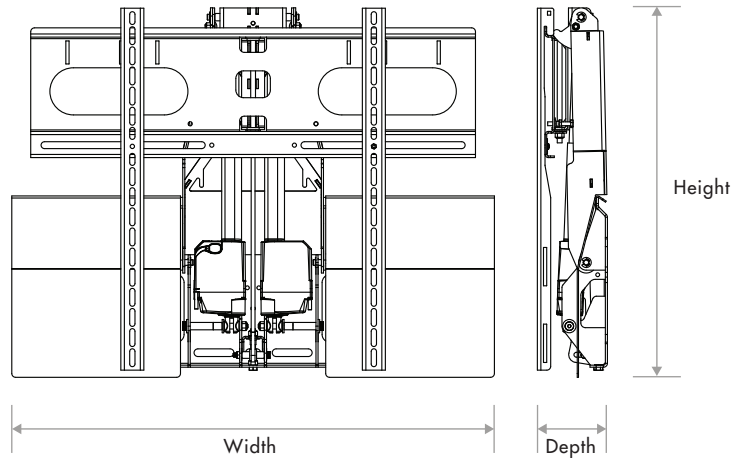
TRANSCEND PRO SURFACE MOUNT

TECHNICAL SPECIFICATIONS

- 125 lbs weight capacity
- TV maximum screen size: 75"
- 27" downward travel
- Depth from wall: 4.625"
- +/- 1 degree of tilt in the top position
- +/- 1 degree of tilt in the bottom position

WHAT'S PROVIDED

- Ready to install, assembled Transcend Pro Surface mount
- Swivel Screen Back Plate
- Pair of Vertical Mounting Bars
- Two Paintable Vanity Plates
- Installation Hardware



Height: 24.1"
Width: 31.5" with vanity cover;
29" with no vanity cover
Depth: 4.625"

ACCESSORIES

- Soundbar Mount
- Extra Wall Support

INSTALLATION TIPS

- Tip #1** Plan where to mount the system prior to making any cuts. Use Nexus' Shelf Clearance Table to properly plan your installation.
- Tip #2** See Nexus' instruction manual for all adjustability provided with this mount.
- Tip #3** Attach the Vertical Mounting Bars as high as possible on the TV in order to maximize your downward travel.

Contact us for more helpful hints!

