



Vaddio Drop Down Series Camera Mounts for Suspended and Drywall Ceilings

Part Number 535-2000-290: Drop Down Ceiling Mount with 12" (304.8mm) Short Pipe and Small Platform, For Sony® EVI-D70, EVI-D100, Canon® VC-C50i, Polycom® PowerCam, and LifeSize® 4X Cameras

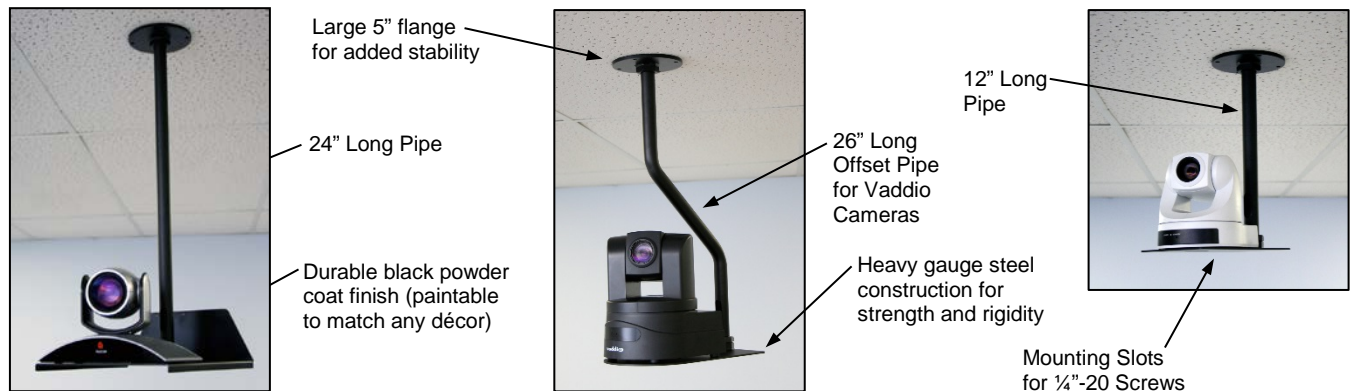
Part Number 535-2000-291: Drop Down Ceiling Mount with 24" (609.6mm) Long Pipe and Small Platform, For Sony EVI-D70, EVI-D100, Canon VC-C50i, Polycom PowerCam, and LifeSize 4X Cameras

Part Number 535-2000-292: Drop Down Ceiling Mount with 12" (304.8mm) Short Pipe and Large Platform, For Sony EVI-HD1, Polycom EagleEye, and Cisco® Precision HD Cameras

Part Number 535-2000-293: Drop Down Ceiling Mount with 24" (609.6mm) Long Pipe and Large Platform, For Sony EVI-HD1, Polycom EagleEye, and Cisco Precision HD Cameras

Part Number 535-2000-296: Drop Down Ceiling Mount with 26" (660.4mm) Offset Pipe and Camera Platform for Vaddio Cameras, For all Vaddio HD-Series PTZ Cameras (18/19/19se/20/22/30/USB) and RoboSHOT 12 & 30 Cameras

Images (left to right): Polycom EagleEye on 535-2000-293, Vaddio HD-19 on 535-2000-296 and EVI-D70 on 535-2000-290.



UNPACKING:

Carefully remove the product and all of the parts from the packaging. Unpack and identify the following parts (cameras not included):

535-2000-290	535-2000-291	535-2000-292	535-2000-293	535-2000-296
One (1) 12" Short Pipe	One (1) 24" Long Pipe	One (1) 12" Short Pipe	One (1) 24" Long Pipe	One (1) 26" Long Offset Pipe
One (1) 1/4"-20 screw	One (1) 1/4"-20 screw	One (1) 1/4"-20 screw	One (1) 1/4"-20 screw	Four (4) 1/4"-20 screws
One (1) Tile Support Brace	One (1) Tile Support Brace	One (1) Tile Support Brace	One (1) Tile Support Brace	One (1) Tile Support Brace
One (1) 5" Mounting Flange	One (1) 5" Mounting Flange	One (1) 5" Mounting Flange	One (1) 5" Mounting Flange	One (1) 5" Mounting Flange
One (1) 5" Large Washer	One (1) 5" Large Washer	One (1) 5" Large Washer	One (1) 5" Large Washer	One (1) 5" Large Washer
Two (1) Hex Nuts 1.5" x .55" (1-14 straight thread)	Two (1) Hex Nuts 1.5" x .55" (1-14 straight thread)	Two (1) Hex Nuts 1.5" x .55" (1-14 straight thread)	Two (1) Hex Nuts 1.5" x .55" (1-14 straight thread)	Two (1) Hex Nuts 1.5" x .55" (1-14 straight thread)
One (1) Hex Nut 1.5" x .375"	One (1) Hex Nut 1.5" x .375"	One (1) Hex Nut 1.5" x .375"	One (1) Hex Nut 1.5" x .375"	One (1) Hex Nut 1.5" x .375"
One (1) Small Camera Platform	One (1) Small Camera Platform	One (1) Large Camera Platform	One (1) Large Camera Platform	One (1) Vaddio Camera Platform

Step 1: For suspended ceiling installations, mark a position in the center of a ceiling tile where the ceiling mount is to be placed. The hole must be positioned at the center of the ceiling tile lengthwise for 2' x 4' ceiling tiles to line up with the tile support brace. Use the tile support brace as a template. The tile support brace is meant to span the tile and distribute the weight into the grid.

For drywall ceiling installations, mark a position in the ceiling while making sure that there are no obstructions (structural supports, electrical, etc.) in the area above the mount.

Step 2: Drill or cut a 1" (25.4mm) diameter hole in the tile or drywall at the point where you marked the hole. For suspended ceiling installations, place the support brace on the top of the ceiling tile and align the hole with the tile support brace. There are six holes in the tile support brace for attaching support wires. Attach the tile brace to the building structure with support wires in accordance with local building codes.

For drywall ceiling installations, place the Mounting Flange over the 1" hole, and mark the four locations in the flange to install appropriate hardware (wall anchors) for mounting the flange to the ceiling.

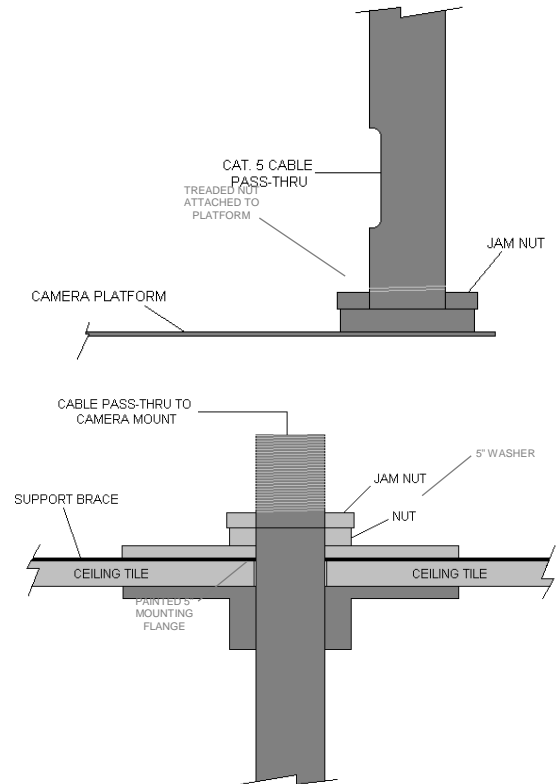
Step 3: Thread the 1.5" x .375" Jam Nut onto the bottom of the pipe (the side with the shorter threads), then thread the Camera Platform all the way onto the pipe. Back the Camera Platform off the pipe (one rotation or less) until the back of the Camera Platform aligns with the cable pass-thru. Carefully tighten the 1.5" x .375" Jam Nut down onto the threaded nut of the Camera Platform.

Step 4: Thread the painted 5" flange onto the other end of the pipe.

Step 5: For suspended ceiling installations, slide the pipe with 5" flange end through the hole in the ceiling tile. From one tile over, place the 5" washer onto the threaded pipe, and screw the first 1.5" x 5.5" hex nut onto the pipe thread and tighten the hex nut down, then thread the second hex nut (jam nut) onto the top of the pipe and tighten it. Carefully feed the Cat-5 cabling through the pipe and the cable pass-thru at the back of the camera mount.

For drywall ceiling installations, once the appropriate mounting hardware for the flange is installed, carefully pull the Cat-5 cabling through the 1" hole in your drywall ceiling. Thread the cabling through the pipe, and pull it through the cable pass thru at the back of the camera platform. Place the flange on the ceiling and tighten the screws down onto the mounting hardware.

Step 6: Place your camera onto the mount and secure it to the camera platform using the supplied black screw(s). Connect the Cat. 5 cabling to the back of the camera and carefully feed excess Cat. 5 cabling back into the ceiling. Use the ¼" - 20 x .375 (shorter) screws for the HD-20, HD-22, HD-30, HD-USB, HD-19SE and RoboSHOT cameras.



INSTALLING THE MOUNT AND CAMERA:

The Drop Down Series of camera mounts can be mounted to either 2 x 2' or 2' x 4' ceiling tiles, or a drywall ceiling. When locating the camera, consider viewing angles, lighting conditions, line of site obstructions and check for vibration where the camera is to be mounted. Pick a location to optimize the performance of the camera.

The integrator is responsible for following building codes, determining the suitability of the suspended or drywall ceiling to carry the load of the camera and mount, as well as making sure that the camera is secured to the camera platform properly.

INTENDED USE:

These products were designed, built and tested for use indoors and to support the weight, size and shape of the prescribed products only. Using these mounts for any other devices could damage that device and/or create potentially unsafe operating conditions.

SAVE THESE INSTRUCTIONS: The information contained in this manual will help you install and operate your product. If these instructions are misplaced, Vaddio keeps copies of Specifications, Installation and User Guides and most pertinent product drawings for the Vaddio product line on the Vaddio website. These documents can be downloaded from www.vaddio.com free of charge.

HARDWARE WARRANTY:

Please see the Vaddio website at support.vaddio.com for the Vaddio Statement of Warranty for all Vaddio Products. The Statement of Warranty covers the policies and procedures of the Hardware Warranty, Exclusions, Customer Service, Technical Support, Return Material Authorizations (RMA), Voided Warranty, Shipping and Handling and Products Not Under Warranty. The Vaddio Warranty Statement supercedes all other published warranty statements in content and coverages. Vaddio Technical Support can be contacted through the Vaddio website or through e-mail support at support.vaddio.com.



Vaddio is a brand of Milestone AV Technologies · www.vaddio.com

Phone 800.572.2011 / +1.763.971.4400 · Fax +1.763.971.4464 · Email info@vaddio.com

Visit us at support.vaddio.com for firmware updates, specifications, drawings, manuals, technical support information, and more. Vaddio is a trademark or registered trademarks of Milestone AV Technologies. All other brand names or marks are used for identification purposes and are trademarks of their respective owners.

In British Columbia, Milestone AV Technologies ULC carries on business as MAVT Milestone AV Technologies ULC.

©2018 Milestone AV Technologies