

GAS SPRING DESKTOP MOUNT fits most monitors

INSTRUCTION MANUAL

Thank you for choosing the AVS ADM502. Before beginning installation, please check all parts are included and undamaged. For any parts enquiries, please contact AV Supply Group Ltd on (09) 274 9172 or email to info@avsupply.co.nz

SPECIFICATIONS

Model: ADM502

Display Size: 10"-24"

Loading capacity: 1.5-5 kg (3.3-11 lbs)

Mounting Pattern: 75 mm x 75 mm, 100 mm x 100 mm

Tilt Range: 85° up and 15° down

Pan/Swivel Range: up to 90°

IMPORTANT SAFETY INSTRUCTIONS

- PRODUCT CARE:** Periodically clean your mount with a dry cloth. Inspect all screws and hardware at regular intervals to ensure that no connections have become loose over time. Re-tighten as needed.
- CAUTION:** Do not use this product for any purpose not explicitly specified by AVS. Improper installation may cause property damage or personal injury. If you do not understand these directions, or have doubts about the safety of the installation, contact AVS Customer Service or call a qualified contractor. AVS is not responsible for damage or injury caused by incorrect mounting, assembly, or use.
- WARNING!** This product contains small items that could be a choking hazard if swallowed. Keep these items away from young children!
- The desk must be capable of supporting the combined weight of the mount and the display; if not, the structure must be reinforced.
- Safety gear and proper tools must be used. Failure to do so can result in injury or damage.

- Follow all instructions and recommendations regarding adequate ventilation and suitable locations for mounting your display. Consult the owner's manual for your particular display for more information.
- AV Supply Group (AVS) intend to make this manual accurate and complete. However, AVS makes no claim that the information contained herein covers all details, conditions, or variations. Nor does it provide for every possible contingency in connection with the installation or use of this product. The information contained in this document is subject to change without notice or obligation of any kind. AVS makes no representation of warranty, expressed or implied, regarding the information contained herein. AVS assumes no responsibility for accuracy, completeness or sufficiency of the information contained in this document.

TOOLS REQUIRED



HARDWARE KIT

(A) M4 x 12 Screw (x4)



(B) M5 x 12 Screw (x4)



(C) M6 x 12 Screw (x3)



(D) M6 x 10 Screw (x2)



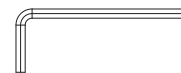
(E) ST 4.2x8 Screw(x1)



(F) φ6.5xφ13x1.8 (x8)



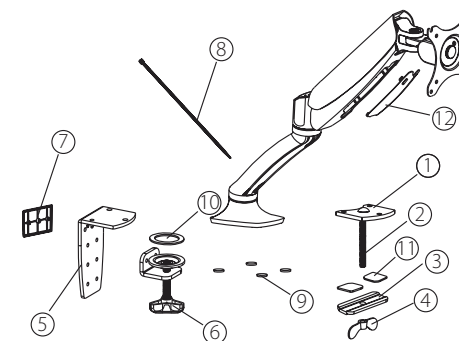
(G) 4x4 Allen Key (x1)



(H) 5x5 Allen Key (x1)



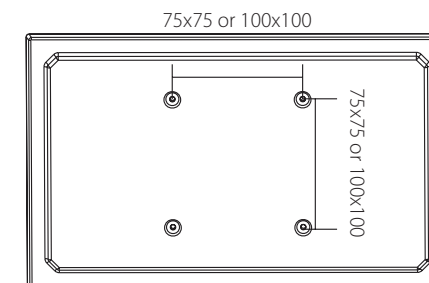
①	Bottom support 1	1PCS	1
②	Screw	1PCS	
③	Washer	1PCS	
④	Butterfly knob	1PCS	
⑤	Bottom support 2	1PCS	2
⑥	Knob	1PCS	
⑦	Cable cover 1	1PCS	3
⑧	Nylon ties	6PCS	
⑨	Anti-slip rubber 1	4PCS	
⑩	Anti-slip rubber 2	1PCS	
⑪	Anti-slip rubber 3	2PCS	
⑫	Cable cover 2	1PCS	



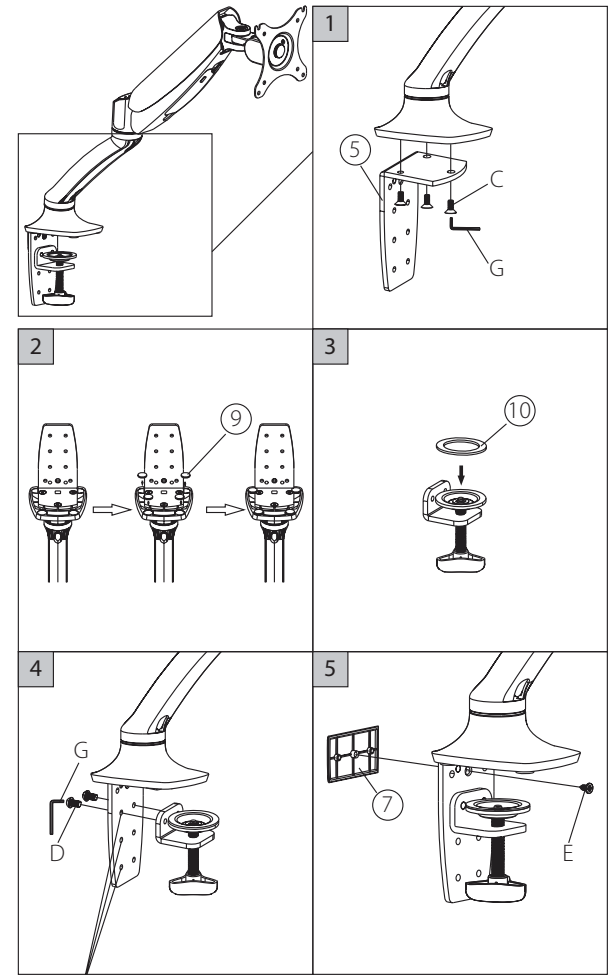
INSTALLATION

Step 1 – Preparations before installing monitor

- Make sure there are VESA holes 100x100mm or 75x75mm in the monitor. If not, the mount couldn't be installed.
- Remove the original fixed base of monitor. Be careful not to scratch the screen.

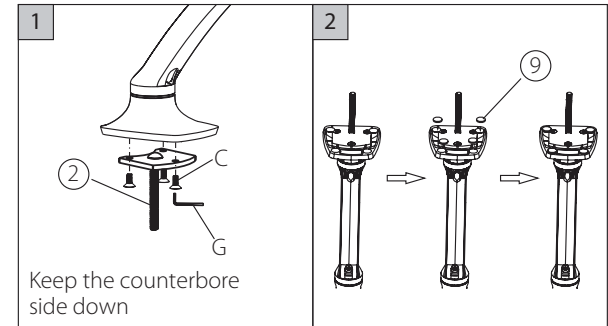


Step 2A – Side desk mounting option

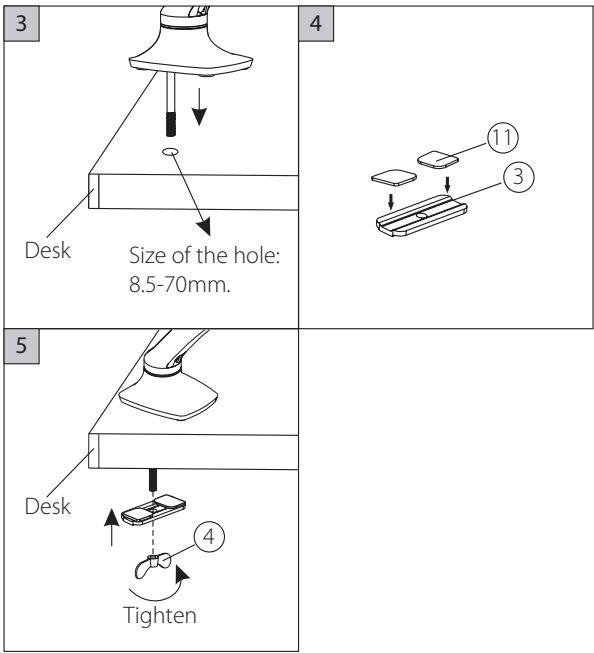


Select right holes according to the thickness of desk

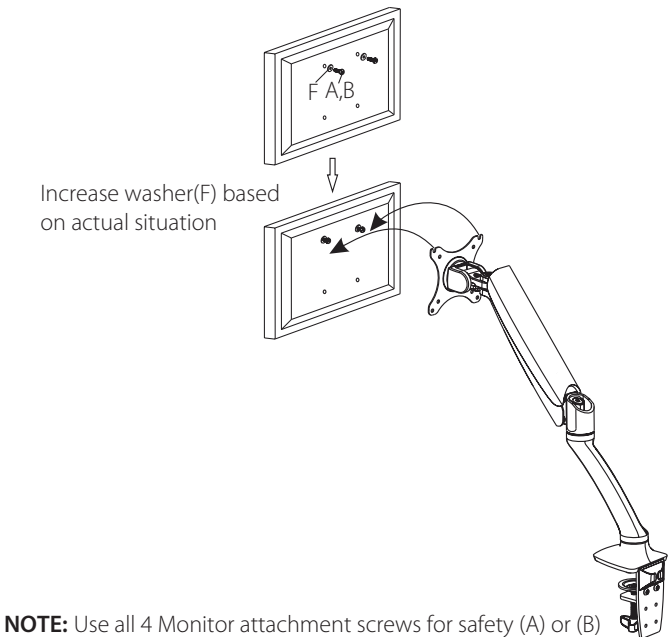
Step 2B – Through desk mounting option



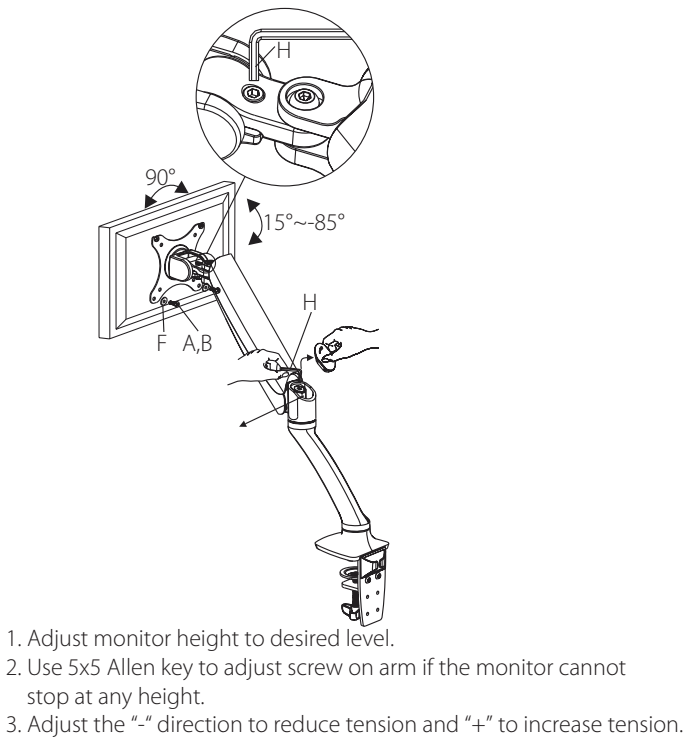
Keep the counterbore side down



Step 3 – Attaching the monitor to the plate



NOTE: Use all 4 Monitor attachment screws for safety (A) or (B)



Step 4 – Using cord management

