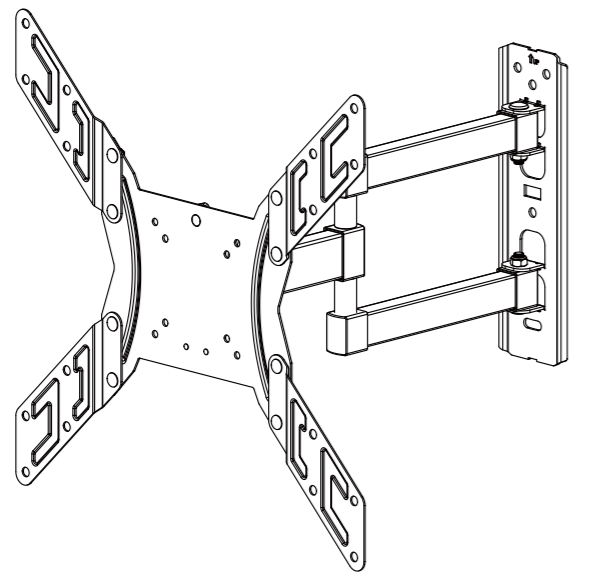


MEDIUM FULL-MOTION TV WALL MOUNT



for most 23" to 55" TVs
up to 66 lbs

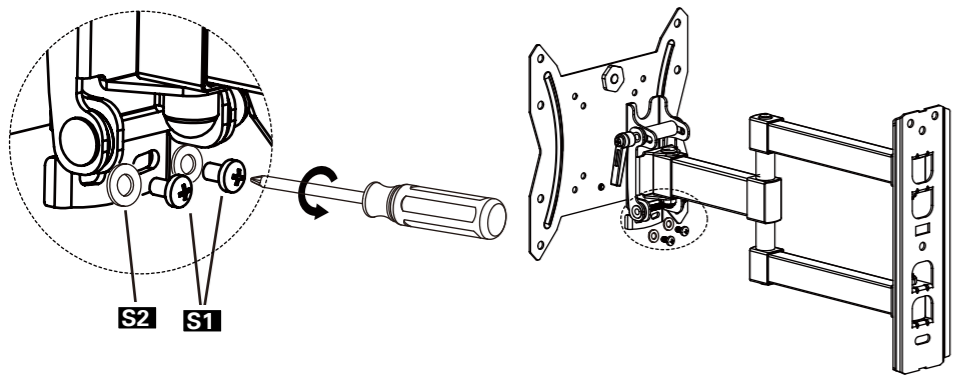


For any parts enquiries, please contact AV Supply Group as below:
New Zealand: P 64 9 274 9172 E info@avsupply.co.nz
Australia: P 61 3 9071 4585 E info@avsupplygroup.com.au

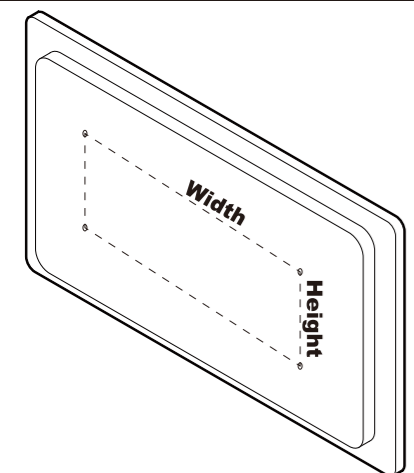
Model: PSMFK1

STEP 1

Using the Screwdriver, remove the screws **S1** and washer **S2** and separate the faceplate and the plastic parts from the bracket. Keep screws for use in **Step 6**



STEP 2



Measure the distance between the holes located at the back of your TV (these measures may form the shape of a square, or a rectangle) and check that these taken measures are within the VESA(*) range for this wall mount.
(*) VESA: International standard established by the TV manufacturers used to determine if LCD / LED TVs are compatible with wall mounts.

75 mm	≈ 2 7/8 in	100 mm	≈ 4 in
200 mm	≈ 7 7/8 in	300 mm	≈ 11 3/4 in
400 mm	≈ 15 3/4 in		

WARNING!

- * **WARNING! SEVERE PERSONAL INJURY AND PROPERTY DAMAGE CAN RESULT FROM IMPROPER INSTALLATION OR ASSEMBLY. READ THE FOLLOWING WARNINGS BEFORE BEGINNING.**
- * If you do not understand the instructions or have any concerns or questions, please contact a qualified installer.
- * Do not install or assemble if the product or hardware is damaged or missing. Not all parts and hardware included must be used. For any parts enquiries, please contact AV Supply Group as below: New Zealand: P 64 9 274 9172 E info@avsupply.co.nz Australia: P 61 3 9071 4585 E info@avsupplygroup.com.au
- * This product has been designed for use on a vertical wall constructed of wood studs. Wood studs being defined as a wall consisting of a minimum of 2" x 4" studs with a maximum of 1/2" of wall covering (drywall, lath, plaster). For custom installations please contact a qualified installer. For safe installation, the wall you are mounting to must support 4 times the weight of the total load. If not, the surface must be reinforced to meet this standard. The installer is responsible for verifying that the wall structure/surface will safely support the total load.
- * **DO NOT EXCEED THE MAXIMUM WEIGHT CAPACITY FOR THIS PRODUCT.**
- * Please check www.perlesmith.com for more products and company information.

WEIGHT CAPACITY

CAUTION!

55"

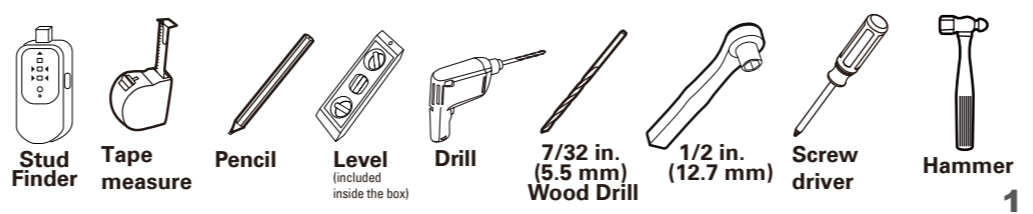
MAXIMUM SCREEN SIZE

66 lbs
30 kg

MAXIMUM WEIGHT CAPACITY

USE WITH PRODUCTS LARGER THAN THE MAXIMUM WEIGHT AND SIZE MAY RESULT IN INSTABILITY CAUSING POSSIBLE INJURY. USER MUST REMOVE TELEVISION OR OBJECT OFF THE BRACKET BEFORE ADJUSTING. NOT SUITABLE FOR A TV THAT SURPASSES THE TELEVISION MAXIMUM WEIGHT CAPACITY AND RECOMMENDED DIAGONAL MEASURED TV SIZE!

Tools Needed



STEP 3

Determine which TV bracket option A, B, or C to use based on your TV hole pattern measurements from **STEP 2**.

OPT A

for VESA hole pattern:
75x75mm, 100x100mm,
200x100mm, 200x200mm.

OPT B

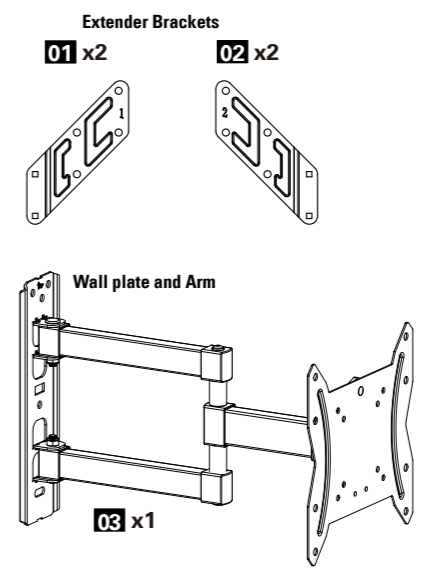
for VESA hole pattern:
300x300mm, 400x300mm,
400x400mm.

OPT C

for VESA hole pattern:
300x200mm, 400x200mm.

75 mm	≈ 2 7/8 in	100 mm	≈ 4 in
200 mm	≈ 7 7/8 in	300 mm	≈ 11 3/4 in
400 mm	≈ 15 3/4 in		

Hardware Included



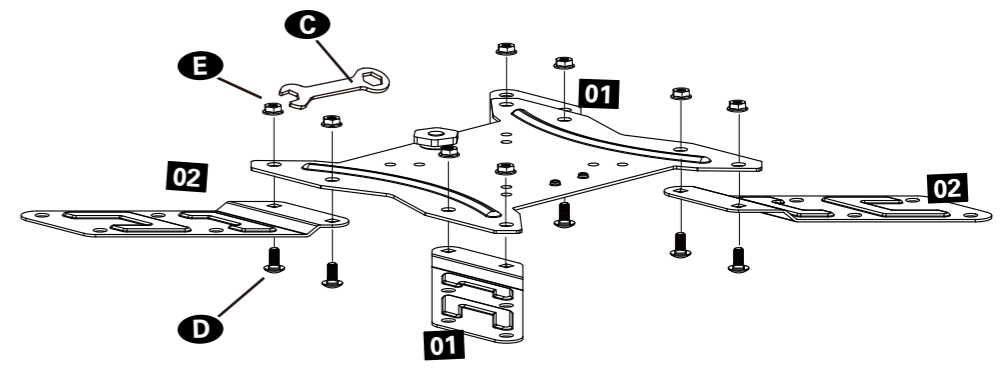
Hardware (Wall/Product)				
Lag Bolts 5/16 x 2 1/2 in	Washers Ø8mm	Allen Wrench	Carriage Bolts M6 x 12	Nuts M6
x3	x3	x1	x8	x8
A	B	C	D	E

TV Screws / Washers

Philips Screws M4 x 12mm M4 x 30mm	Philips Screws M6 x 15mm M6 x 30mm	Philips Screws M8 x 15mm M8 x 45mm	Spacers L10mm	Washers Ø6mm M4-5-6	Spacers L5mm
x4	x4	x4	x8	x4	x8
M-A	M-B	M-C	M-D	M-E	M-F

Remind!

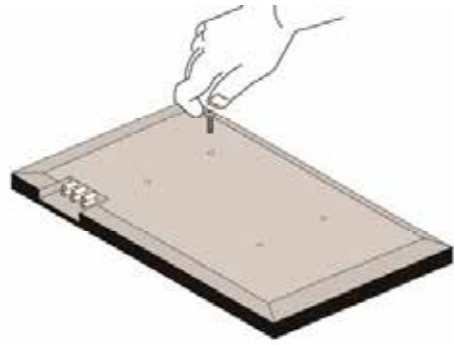
If your TV hole pattern is greater than 200 mm x 200 mm (OPT B and C), attach TV bracket extenders **02** and **01** to faceplate using Carriage bolts **D** and nuts **E**



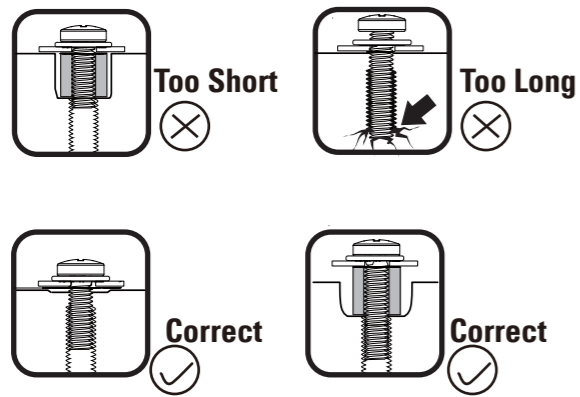
STEP 4-1 BEFORE TV BRACKET INSTALLATION

Check TV screws

Please select the proper screw length for your TV by hand tightening to check your plate panel thread depth.



! When attaching brackets to the flat screen, be careful not to over tighten screws and be sure that screws do not bottom out in the mounting holes.

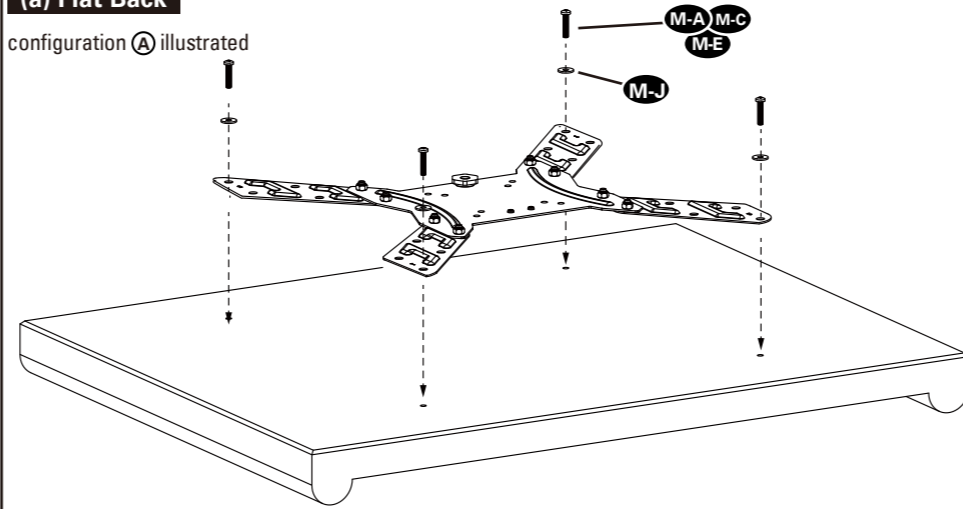


6

STEP 4-2 Install TV bracket

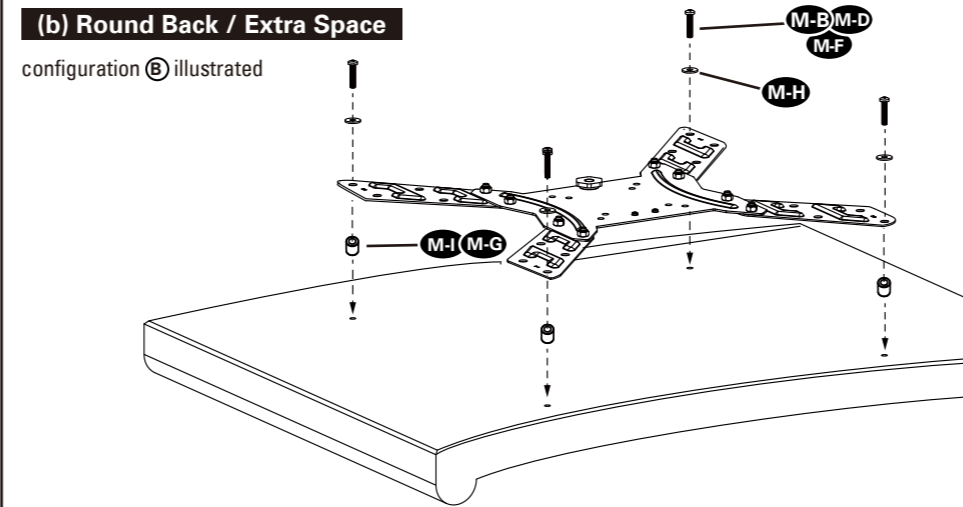
(a) Flat Back

configuration (A) illustrated



(b) Round Back / Extra Space

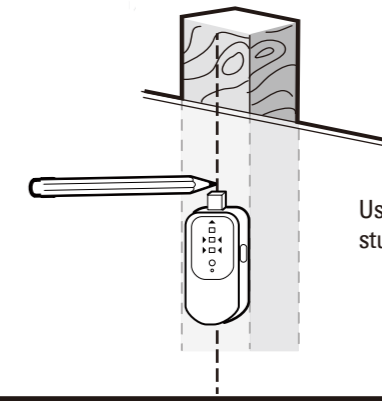
configuration (B) illustrated



STEP 5 Wall Plate Install

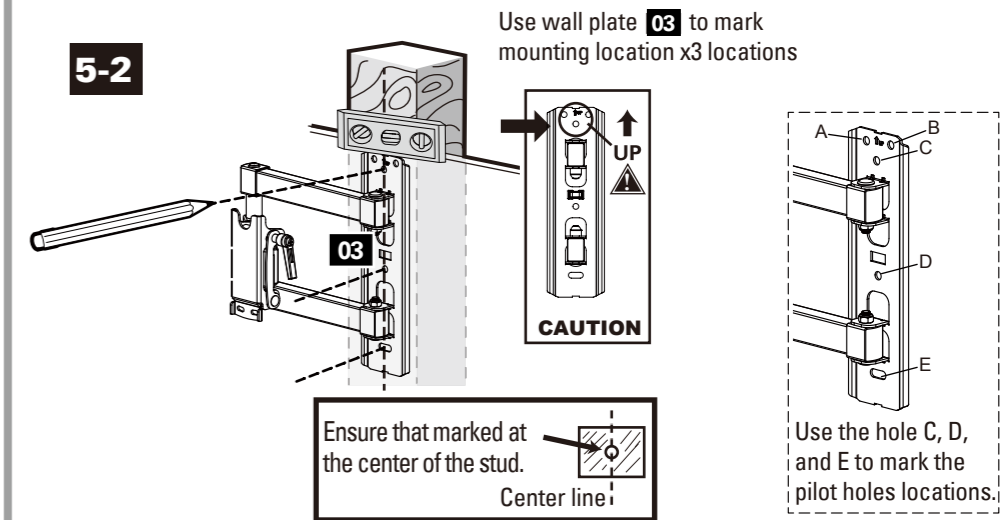
! CAUTION: Ensure the wall plate is securely fastened to the wall before continuing on to the next step.

5-1



Use a stud finder (not included) to locate wood stud. Mark the edge and center locations.

5-2



Use wall plate 03 to mark mounting location x3 locations

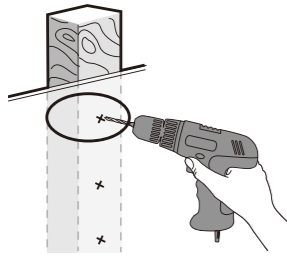
Ensure that marked at the center of the stud. Center line

Use the hole C, D, and E to mark the pilot holes locations.

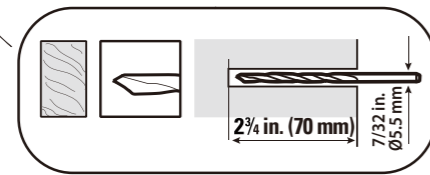
8

STEP 5 Wall Plate Install

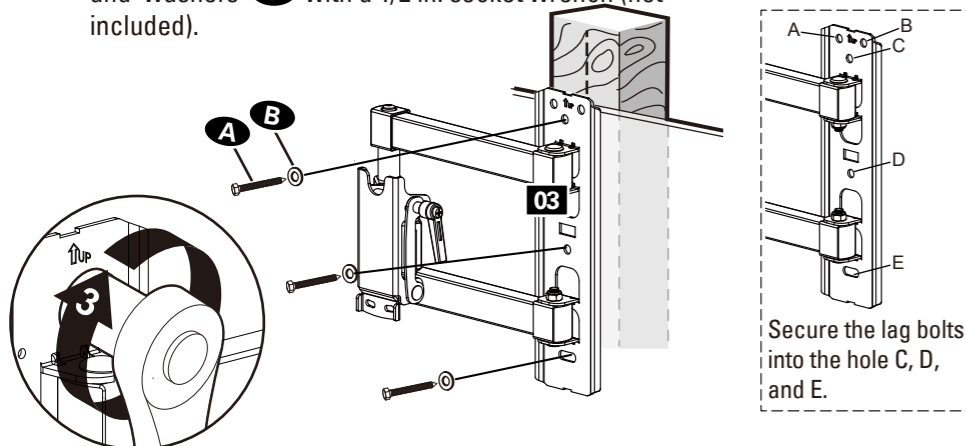
5-3



Drill 3 pilot holes using a 7/32 in. (5.5 mm) diameter drill bit. Make sure the depth is not less than 2 3/4" (70mm).



5-4 Mount wall plate 03 using 3 sets of 5/16 lag bolts (A) and washers (B) with a 1/2 in. socket wrench (not included).

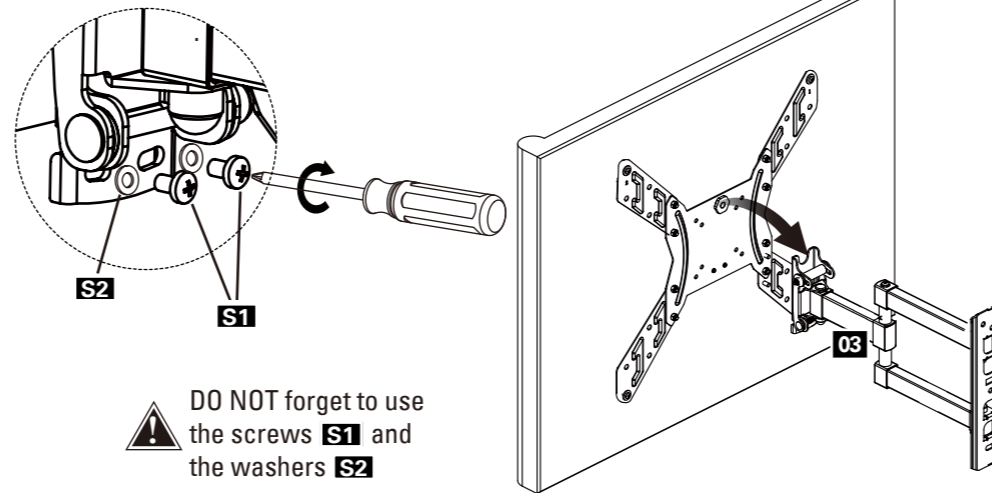


Secure the lag bolts into the hole C, D, and E.

9

STEP 6 Level adjustment

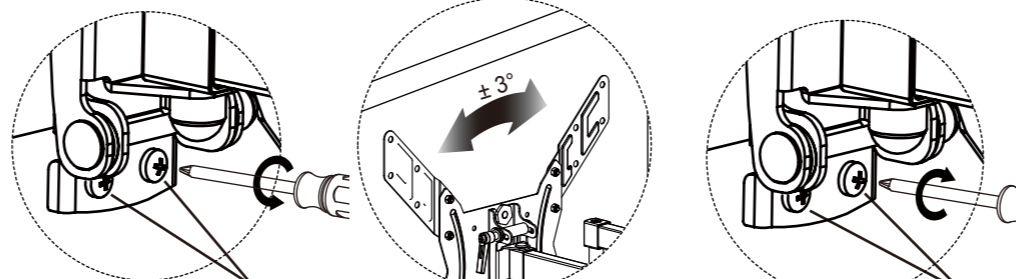
Place assembled part with TV onto arm and using Screwdriver, secure with screws S1 and washers S2 saved from Step 1



! DO NOT forget to use the screws S1 and the washers S2

Post Installation Level

If needed, the TV can be leveled +/- 3 degrees.



Loosen 2 screws S1

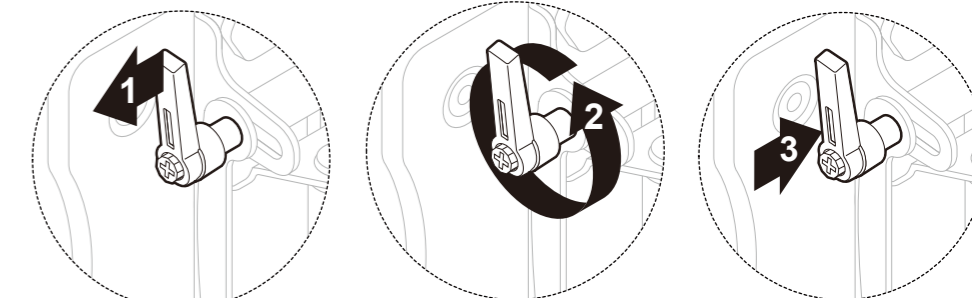
Level the TV

Tighten 2 screws S1

10

STEP 7 Tilt adjustment

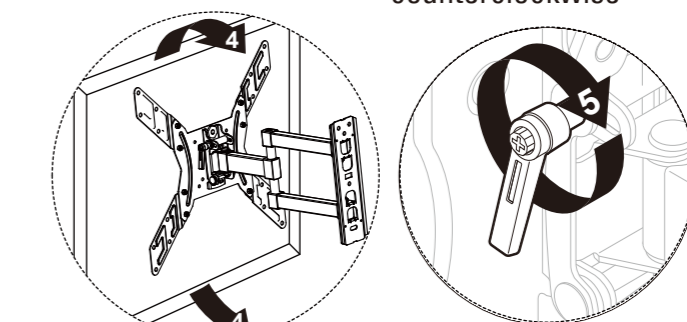
Rotate handle clockwise as far as possible. Pull handle out and rotate counterclockwise as far as possible. Repeat until tight. To loosen, reverse the above step.



Pull the handle and hold

Rotate the handle counterclockwise

Release the handle



Tilt the TV

Tighten the handle clockwise

! CAUTION: Ensure the wall plate is securely fastened to the wall before continuing on to the next step.

11