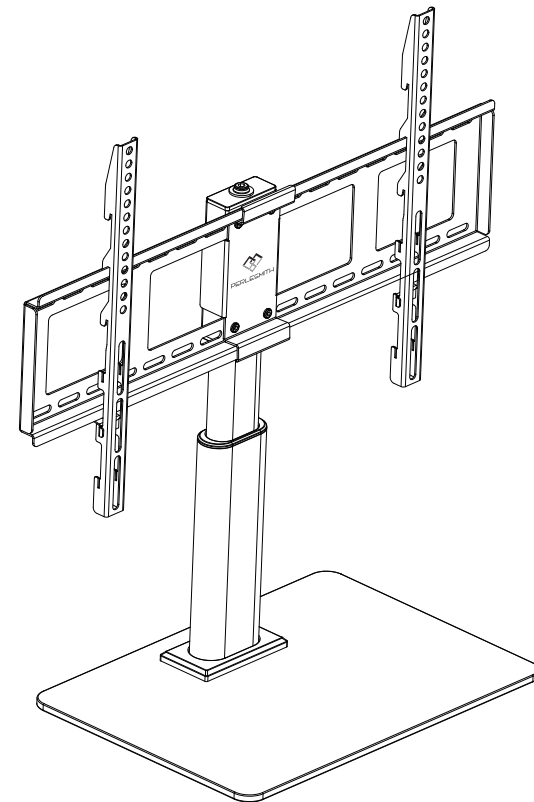




PERLESMITH

Installation Instruction

V2.0



MODEL: PSTVS02

For 32" - 65" TVs
up to 40kg

For any parts enquiries, please contact AV Supply Group as below:
New Zealand P 64 9 274 9172 E info@avsupply.co.nz
Australia P 61 3 9071 4585 E info@avsupplygroup.com.au

7

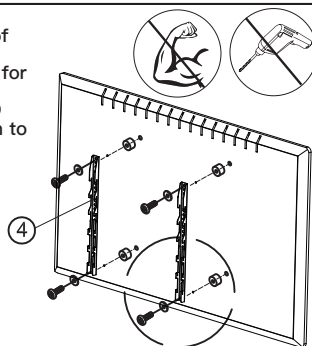
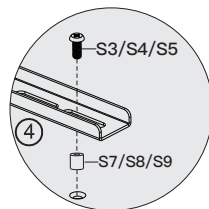
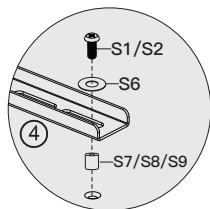
Attach Vertical TV Brackets

Ensure that your TV Brackets ④ are level and centered on the back of the TV.

Install using the TV screw/washer/spacer configuration you selected for your TV.

CAUTION: Avoid potential personal injuries and property damage! DO NOT use power tools for this step. Tighten the TV screws only enough to secure the TV brackets ④ to the TV. DO NOT over-tighten the TV screws.

S1	M6x15mm		4
S2	M6x35mm		4
S3	M8x25mm		4
S4	M8x35mm		4
S5	M8x50mm		4
S6	D6 Washer		4
S7	2.5mm Spacer		8
S8	10mm Spacer		4
S9	22mm Spacer		4

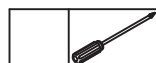
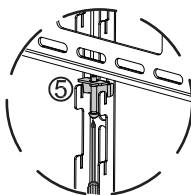
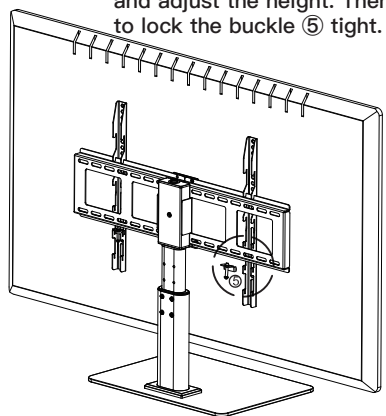
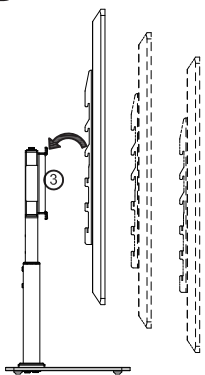


Alternate
Spacer
Setups

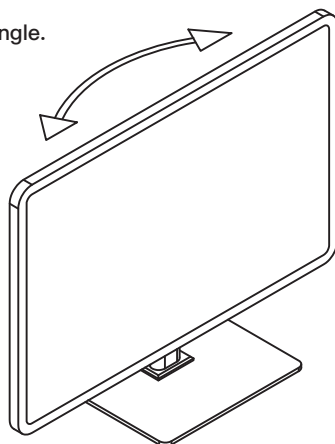
8

Secure TV onto TV Plate

Hang the TV(with the brackets ④) on TV Plate ③ and adjust the height. Then use the screwdriver to lock the buckle ⑤ tight.



9

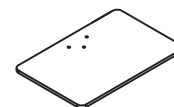
Swivel to the desired angle.**IMPORTANT SAFETY INFORMATION**

SEVERE PERSONAL INJURY AND PROPERTY DAMAGE CAN RESULT FROM IMPROPER INSTALLATION OR ASSEMBLY. READ FOLLOWING WARNINGS BEFORE BEGINNING.

- If you do not understand the instructions or have any concerns or questions, please contact customer service at supportus@perlesmith.com
- Do not install or assemble if the product or hardware is damaged or missing.
- Not all parts and hardware included will be used. If you require replacement parts, contact customer service at supportus@perlesmith.com
- This product may contain moving parts. Use with caution.
- Please check www.perlesmith.com for more products and company information.
- Exceeding the weight capacity can result in serious personal injury or damage to equipment! It is the installers' responsibility to make sure the combined weight of the product and the TV does not exceed maximum weight. Use with heavier televisions may result in instability, causing tip over or resulting in death or serious injury!

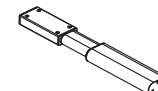
Supplied Parts and Hardware

Glass Base



① x1

TV Pillar



② x1

TV Plate



③ x2

TV Bracket



④ x2

Buckle



⑤ x2

Covering plate



⑥ x1

Parts and Hardware

Rubber foot

A_{x4}

Plastic plate

B_{x1}

M8*25mm

C_{x3}

M6*12mm

D_{x8}

D8 washer

E_{x3}

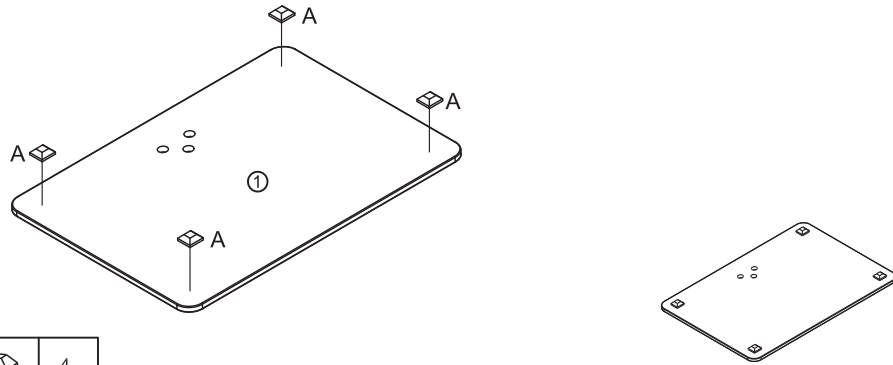
4mm

F_{x1}

5mm

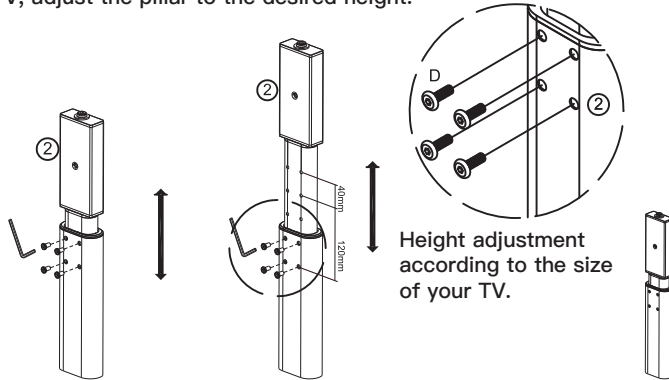
G_{x1}

- 1 Place foot pads **A** on the bottom of the base **①** in the corners.



A		4
---	--	---

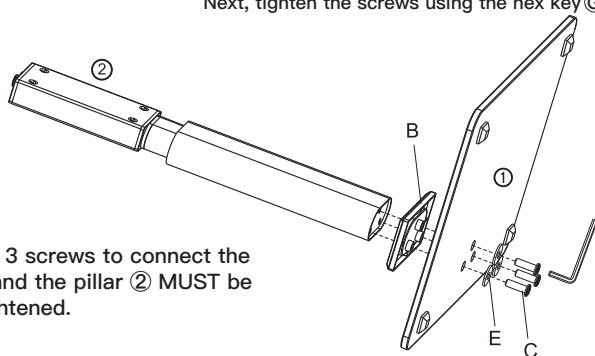
- 2 Screw the four screws **D** to the pillar **②** using the hex key **F**. Before mounting the TV, adjust the pillar to the desired height.



D		4
F		1

Height adjustment according to the size of your TV.

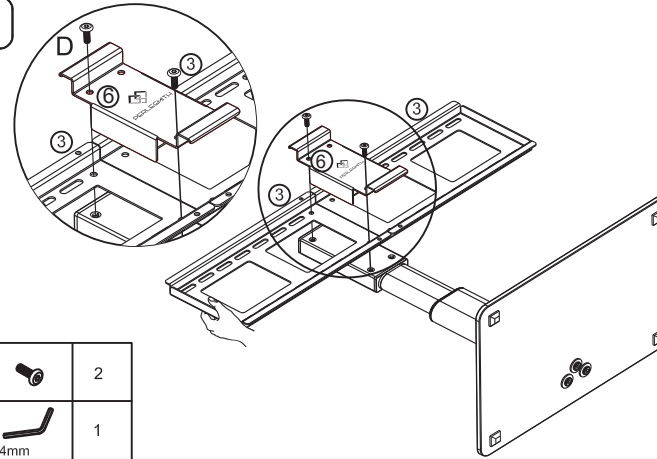
- 3 Attach the pillar to the base. Attach the pillar **②** to the base **①** using **C** and **E**. Remember to place the plastic plate **B** in between the pillar **②** and base **①**. Next, tighten the screws using the hex key **G**.



Note: The 3 screws to connect the base **①** and the pillar **②** MUST be firmly tightened.

B		1
C		3
E		3
G		1

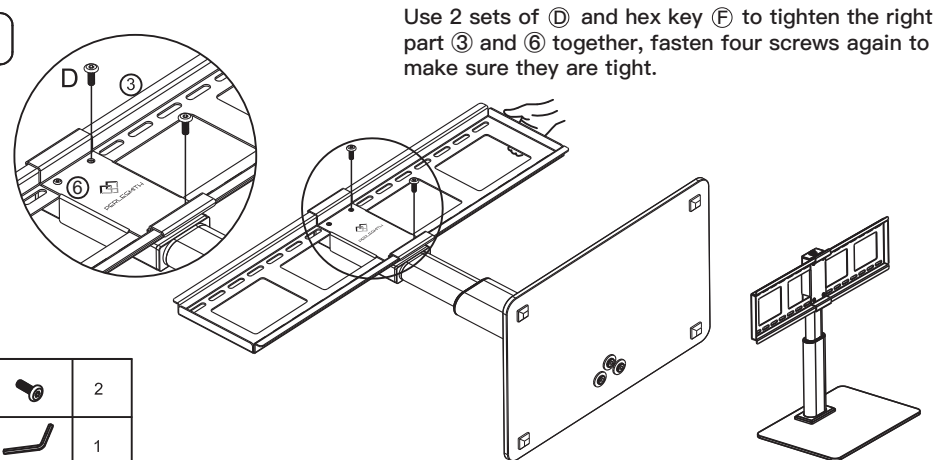
4



D		2
F		1

Attach the parts **③** and **⑥** to **②**. Put the 2 plates **③** next to each other on top of the pillar in line with the screw holes. Next, place the covering plate **⑥** with the LOGO facing upwards on top of the plates **③** in line with the screw holes. Use 2 sets of **D** and hex key **F** to tighten the left part **③** and **⑥** together.

5

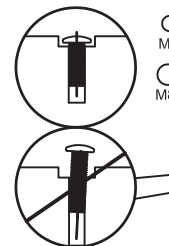


D		2
F		1

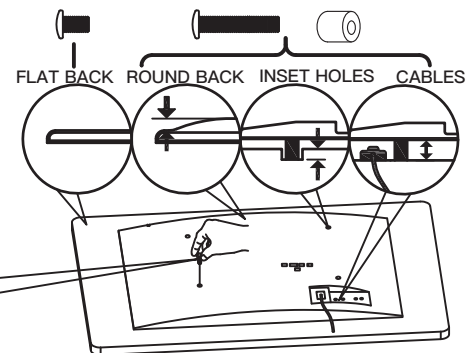
Use 2 sets of **D** and hex key **F** to tighten the right part **③** and **⑥** together, fasten four screws again to make sure they are tight.

6

Select TV Screws Diameter
Hand thread TV screws into the threaded inserts on the back of your TV to determine which screw diameter (M6 or M8) to use. Select TV Screw diameter.



Select TV Screw Length
If your TV has a flat back, use the shorter TV screws. Spacers and longer TV screws are supplied to accommodate: irregular/round back TVs, TVs with inset mounting holes, Extra space needed for cables



CAUTION:
Verify adequate thread engagement with the screw or screw/spacer combination.
-Too short will not hold the TV.
-Too long will damage the TV.

